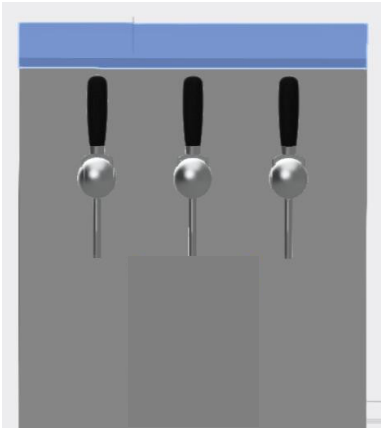


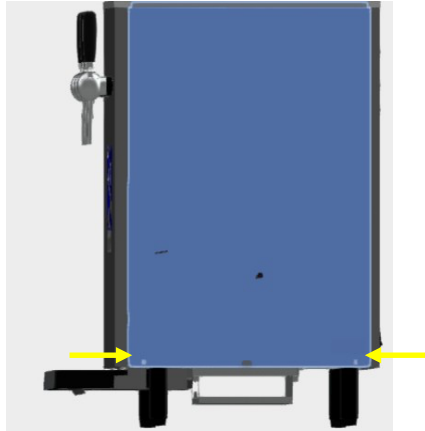
# S18 Countertop

## THERMOSTAT REPLACEMENT

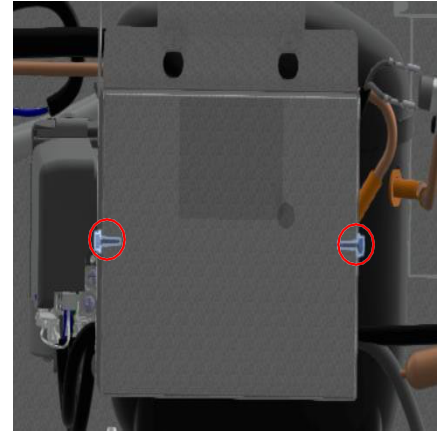
Ensure that the dispenser is powered off and unplugged, the water and CO2 are turned off, and all taps are de-pressurized. This ensures that you can safely work on all components of the Dispenser.



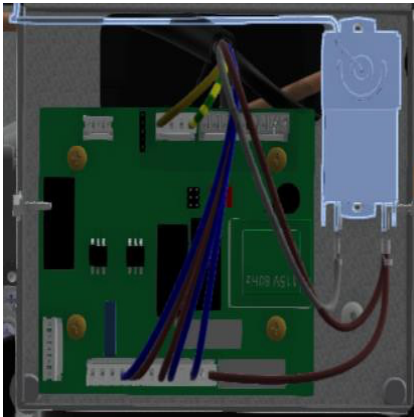
1. Remove dispenser top by lifting up on the front. Remove ground wires underneath lid on back left.



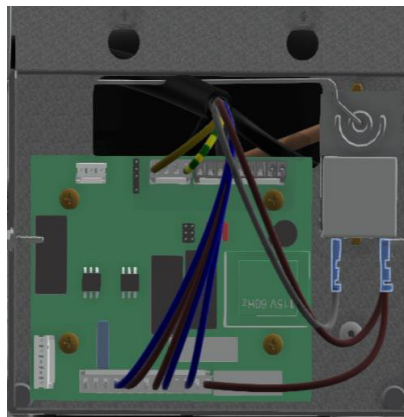
2. Locate electrical box cover and the two screws.



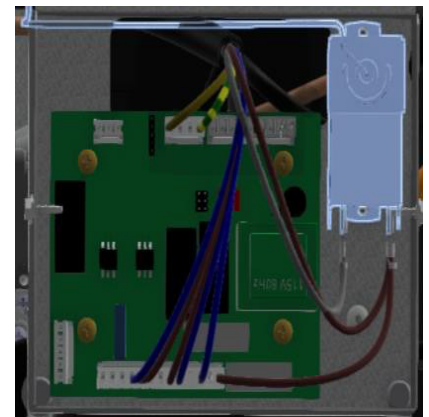
3. Remove two right side panel screws and lift panel off.



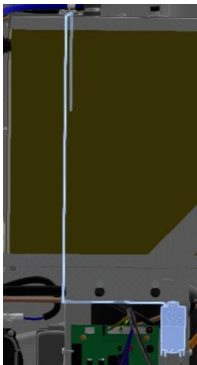
4. Remove cover and locate the Thermostat. Remove 2 screws that secure the thermostat.



5. Unplug two wires from thermostat and plug them in to the new thermostat



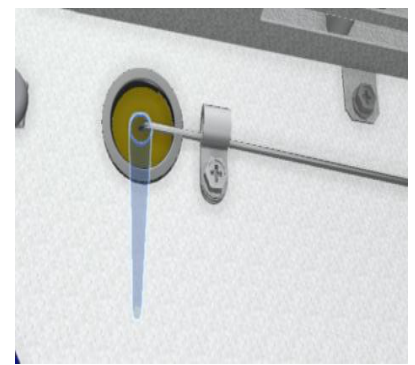
6. Secure new thermostat with the same two screws.



7. Follow probe wire to the top of the dispenser.



8. Remove screw from harness, and pull the probe out of the bulbwell.



9. Guide new probe wire on the side of dispenser, then insert the probe into the bulbwell as far as it will go. Secure with harness and screw, replace cover and panels.