




S4 PARTS LIST

No.	Part No.	Description	Rec' Stock	Photo
1	31-0490-2	BASE PLATE FOOT	0	
2	11-1546-1	LEAK STOP FLOAT VALVE	2	
3	41-2048-0	POWER CORD PLUG	0	
4	41-2180-0	BOOSTER PUMP	1-2	
5	41-2092-0	FAN MOTOR	0	
6	41-2055-0	HOT TANK POWER SWITCH	1	
7	11-3264-0	SHUT-OFF FLOAT	1	
8	41-1201-1	TEMPERATURE SENSOR – COLD TANK	1-2	

9	41-1678-1	AGITATOR MOTOR	2-3	
10	11-3034-1	MIXER	2-3	
11	41-1194-2	HIGH PRESSURE SOL V/V	2-3	
12	41-1449-2	SPARKLING SOL V/V	2-3	
13	41-1768-4	HOT WATER SOL V/V	2-3	
14	41-1448-1	PRESSURE SWITCH 2K (WHT COLLET)	1	
15	41-2198-0	PRESSURE SWITCH 6.5K (RED COLLET)	1	
16	41-2274-0	PRESSURE SWITCH WIRE	0	

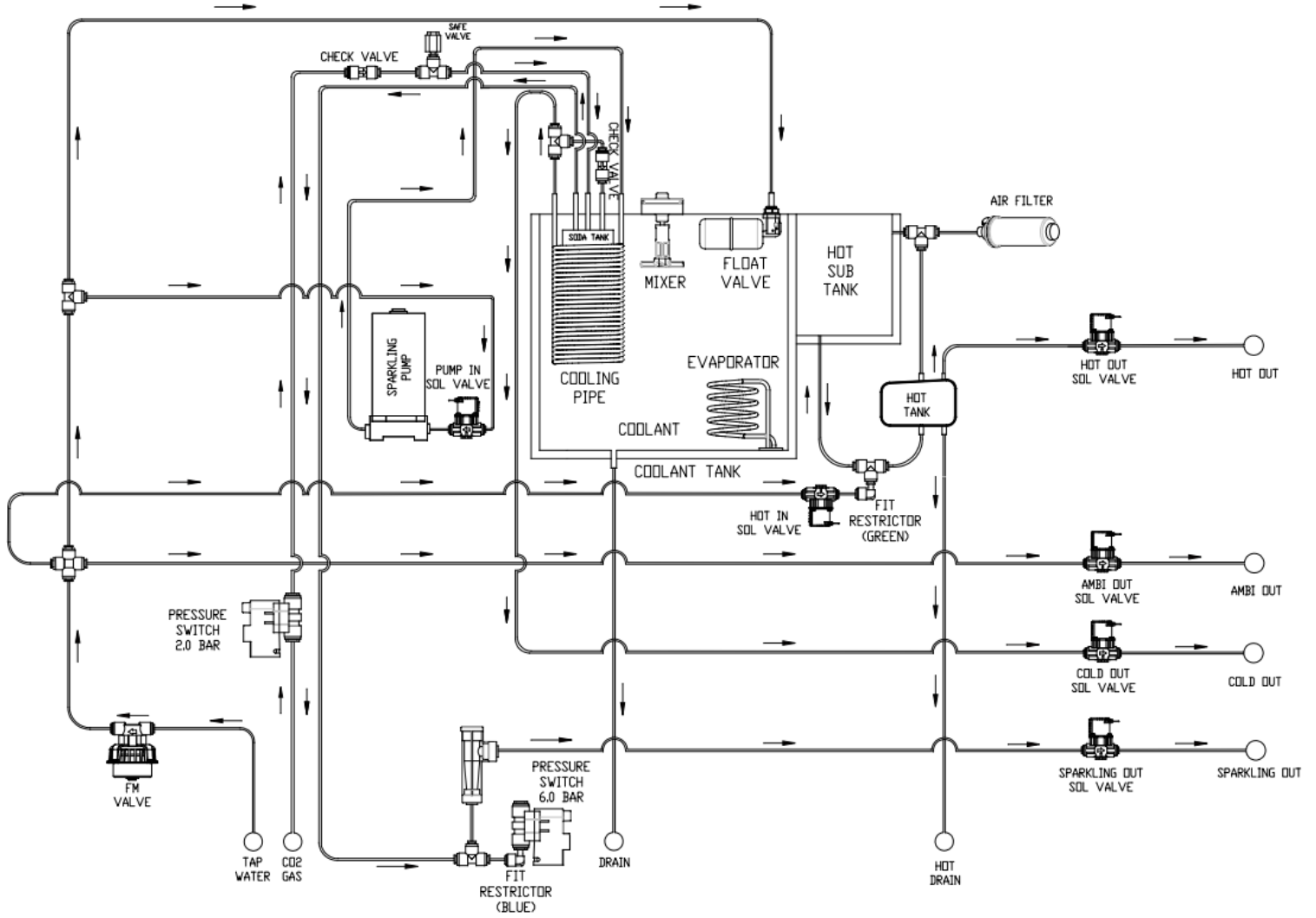
17	41-1432-2	WATER LEVEL SENSOR (2 PIN)	1-2	
18	91-4119-0	HOT TANK ASSY	0-1	
19	11-1088-0	¼" RESTRICTOR FITTING	1-2	
20	91-4247-0	MANIFOLD FAUCET ASSY	0-1	
21	51-0347-1	6" SEDIMENT AIR FILTER	Change every 24mo	
22	11-3268-0	¼" SPARKLING FLOW CONTROL	1-2	
23	11-0978-3	¼" RESTRICTOR FITTING	1-2	
24	11-2044-0	¼" CHECK VALVE	0-2	

25	41-2268-0	MAIN PCB	1	
26	21-0627-0	GAS SAFETY VALVE	0	
27	91-4111-0	FRONT COVER ASSEMBLY	0	
28	41-2269-0	FUNCTION PCB	1	
29	41-2271-0	LOGO PCB	0-1	
30	41-2145-0	IR SENSOR	2	
31	91-4288-0	DECO FAUCET COVER ASSY	0	
32	91-3646-0	DECO FAUCET ASSY	0	

33	11-3271-0	SIDE COVER	0	
34	11-3272-0	TOP COVER	0	
35	91-4112-0	DRIP TRAY ASSEMBLY	0	

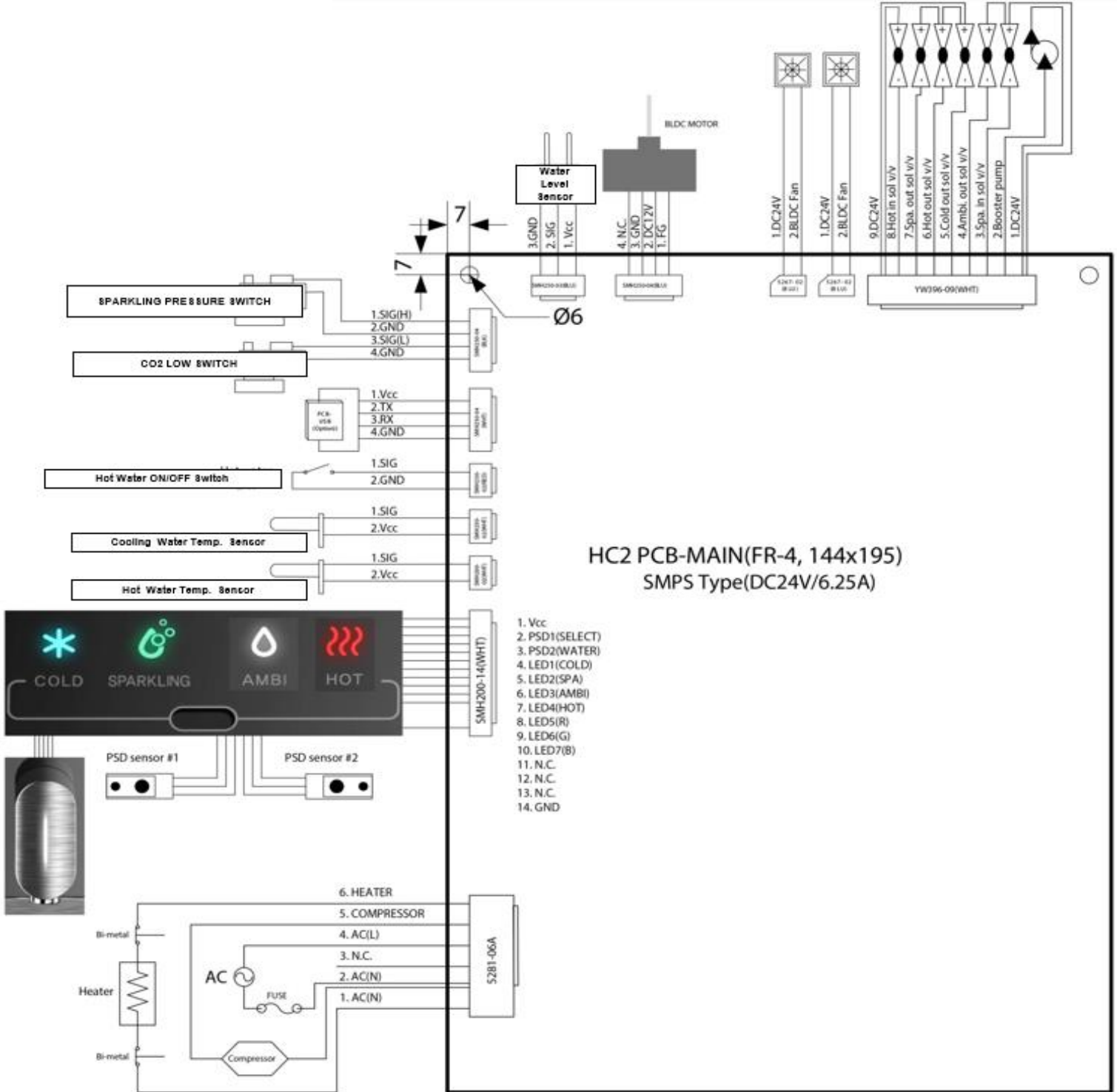
S4 WATER FLOW DIAGRAM

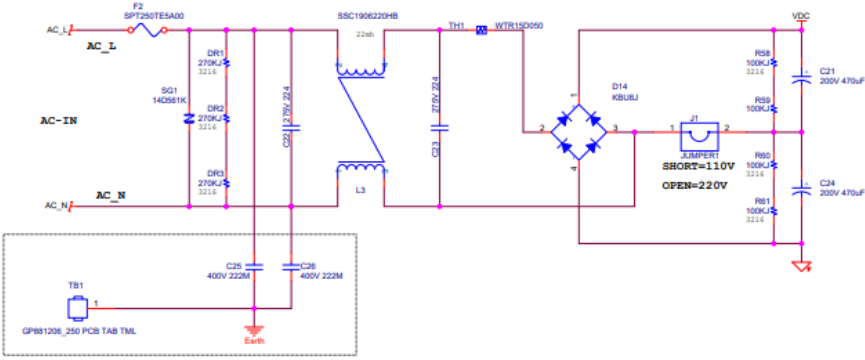
< SPARKLING WATER FLOW >



S4 PCB DIAGRAM

⚠ DANGER! HIGH VOLTAGE ELECTRICAL HAZARD. PCB (Printed Circuit Board) contains High Voltage. Only trained and qualified technicians should attempt live testing.





110V/220V SMPS

	110VAC	220VAC
C21	200V 470uF	400V 180uF
C24	200V 470uF	Short (Jumper)
J1	Short (Jumper)	OPEN

