

## FILTER FLUSHING PROCEDURE

The *Wellsys i30 Ice and Water Dispenser* is paired with a single ICE10K filter, a Fiber-Core Filter with Phosphate for Scale Reduction. This filter must be flushed prior to installation into the units water supply. To flush, follow the procedure below:

1. Insert and lock the filter cartridge into the filter head.



2. Connect the inlet of the filter head to the water supply using 3/8" LLDPE tubing. Take note of the small arrow on top of the head indicating the proper flow direction. Using the same tubing, connect a length of tube to the outlet of the filter head, such that it can be routed to a drain or sink.



3. Turn on the water and check for leaks at both ports of the filter head, and between the filter and filter head union. If leaks occur, and cannot be diagnosed, call Product Support.



4. Allow 5 gallons of water to run through the filter. Once complete, shut the water off, and continue to the **Filter Installation** section.

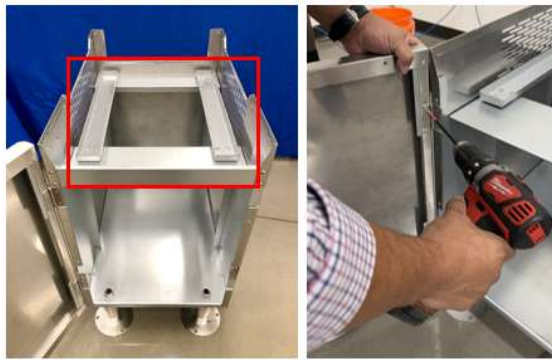
## i30 INSTALLATION

### SETTING THE I30 ON THE BASE (if Freestanding)

To place the unit safely and properly onto the Base Cabinet, follow the procedure below.

**NOTE: Moving this unit is a two-person lift.**

1. Using a level, adjust the legs on the base to ensure the base is level prior to setting the I30 on the base.
2. The legs of the ice machine will sit on the rails on top of the base. **Pro Tip:** Remove the base door so that it is not in the way when walking the ice unit onto the base. Reinstall it once the unit is set on base.



3. Remove the drip tray from the unit by pulling it straight out from the front. This will provide a grip point when it comes time to lift and walk the unit onto the base. The second grip point is the bottom back of the unit. Make sure to grab inside of the legs.



4. Grab hold of the unit and using your legs, lift the unit. Carefully walk the unit onto the base and set it down with the legs on the base rails.

**NOTE: Again, to move this unit requires a two-person lift.**



### **INSTALLING THE SUPPORT BRACKETS (if Freestanding)**

The Base Cabinet has two support brackets included in the box that can be used to secure the unit to the Base Cabinet. The following procedure outlines how to install them.

1. The i30 Support Brackets secure the unit to base. The pair of brackets come with four screws. Remove the bottom screws from the side panels of the unit and set them aside.



2. Secure the Support Bracket to the base using the screws provided with the bracket. Using the screws from the side panel that were set aside, secure the Support Bracket to the ice machine.



## **DRAIN KIT INSTALLATION**

The following procedure outlines how to properly install the included drain kit onto the unit.

1. Locate the provided brass  $\frac{3}{4}$ " NPT x 1" Barb fitting. Apply Teflon Tape to the threads and screw the fitting into the unit in the location shown.



2. The provided drain kit consists of the Molded Drain Line, 3 worm gear clamps, and one female  $\frac{3}{4}$ " NPS x 1" Barb fitting that will accept  $\frac{3}{4}$ " NPS x  $\frac{1}{2}$ " CTS.



3. Route drain kit from the rear and bottom of the unit and clamp the 1.25" end of the drain kit on to the drip tray port with the provided clamp. Next clamp the 90° end of the drain kit onto the 1" brass barbed fitting on the I30. The dogleg of the drain hose can be connected to any 1" barb fitting using the last clamp to adapt to the desired drain solution.



## **CONDENSATE PUMP INSTALLATION**

It is recommended that if the unit cannot be installed in close proximity to a floor drain (10ft or less), a condensate pump should be used to pump the drain water to an external drain. The following procedure outlines how to install a condensate pump to use with the unit.

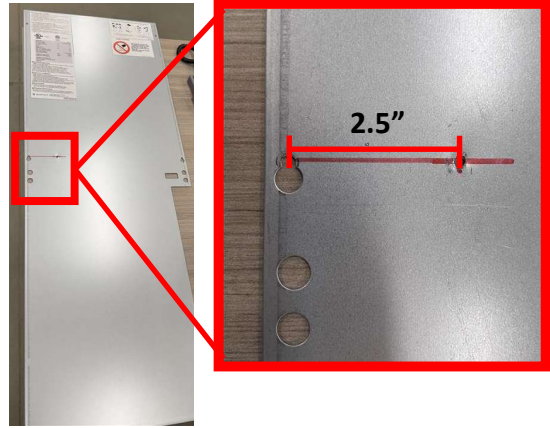
1. Place the condensate pump at the rear of the unit, and connect to power.
2. Using desired tubing, route the outlet of the condensate pump to the drain. It is recommended, and if possible, to use a one-way check valve on this line.
3. Connect the dogleg of the molded drain line to the collection port of the condensate pump using desired tubing or hose solution. Materials to accomplish this are not included with the unit, and should be selected and used at the sole discretion of the installer. The photos shown use ½" rigid PEX line to route to the condensate pump.



## **FILTER INSTALLATION**

To install the filter, follow the steps outlined below:

1. The Filter Head Bracket should be mounted with two screws to the back of the unit. The Filter Head Bracket and Filter Assembly can be mounted using only one screw in a pre-existing hole, but it is recommended to mark and drill a second screw hole in the back panel of the unit. The hole should be drilled 18.25" down from the top edge of the back panel, 2.5" to the right of the existing hole shown.



2. Secure the filter bracket in place using the existing screw that holds the panel in place and a provided screw. Then secure the filter head onto the bracket and install the filter making sure it locks in place.



3. After adapting to the cold-water side of the water source, insert 3/8" tubing into the "IN" port of the filter head. Assuming the filter has already been flushed, run 3/8" tubing from the "OUT" port of the head to the bulkhead on the ice machine. Turn water "ON" and check for leaks. **NOTE:** Max water pressure is 60psi.



## SANITIZING THE UNIT

Before starting the sanitizing or normal operation, any filter(s) being used to filter the source water for the unit must be flushed. **DO NOT install and setup the unit before flushing the filter(s).** Listed below are the steps to properly sanitize the *Wellsys i30 Ice and Water Dispenser*.

### What you will need:



- Safety Glasses
- IMS-III Sanitizing Concentrate (Recommended)
- 1-gal Pitcher
- Nitrile Gloves
- WypAll Towels for sanitizing processes
- Microfiber towels – Exterior
- 1 32oz spray bottle
- Step Stool or Ladder

### Sanitizing Solution

Prepare the recommended “Sanitizing Solution” by mixing 1.6oz of IMS-III Sanitizing Concentrate with 1 gallon of water. The label on the bottle is marked and each mark represents 1.6oz. **Pro Tip:** To produce a suds free Sanitizing Solution, fill the 1-gallon container with water first, then pour the concentrate solution into the pitcher of water and stir.



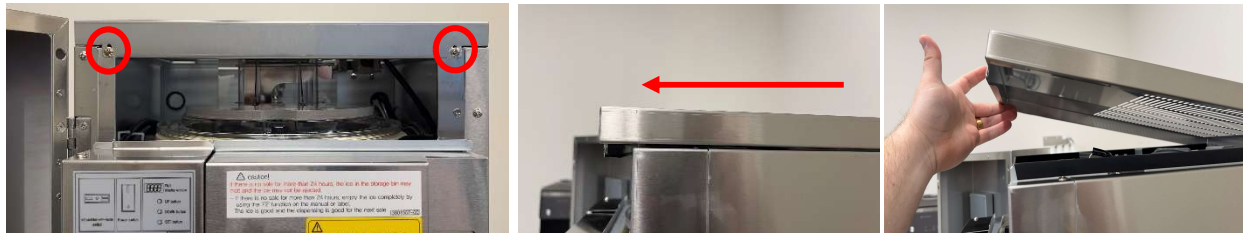
Remove the sprayer from the spray bottle and fill the bottle with sanitizing solution from the pitcher. Leave the sprayer off and set the bottle aside. The bottle will be used to fill the water reservoir during the sanitizing process which will use up to 2 liters, so the bottle will need to be filled twice.



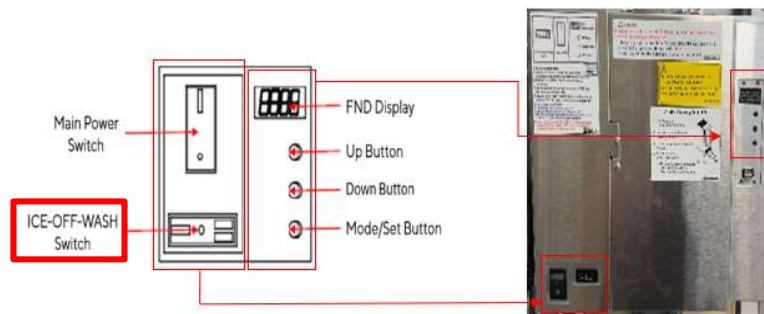
1. Open the Front Door Panel of the unit. To do this, simply use a flathead screwdriver to turn the slotted key counter-clockwise to unlock the panel. Then, give a firm pull on the bottom lip of the door panel.



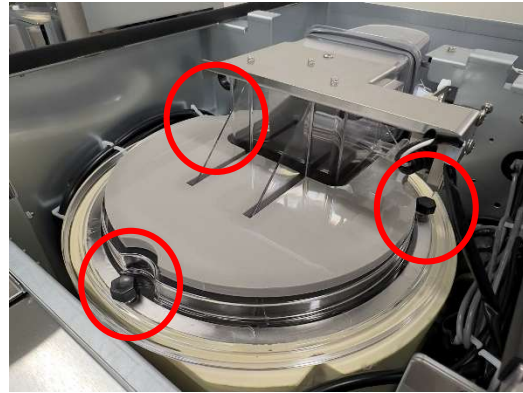
2. Remove the Top Panel. After opening the Front Door Panel, locate the two screws circled in RED and set them aside. Pull the panel about 1" forward, lift, and remove.



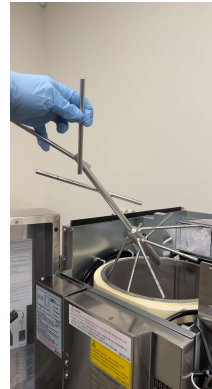
3. With the water supply "ON", set the "Ice-Off-Wash" (IOW) switch to "Off" and then turn the Main Power switch "ON".



- Remove the top cover to the unit then remove the hopper cover by removing the three white colored thumb screws around the perimeter of the cover, circled in **RED**. The lid has a switch connected to a cable. There is no need to disconnect this, as there is enough slack in the cable to set the lid aside without disconnecting.



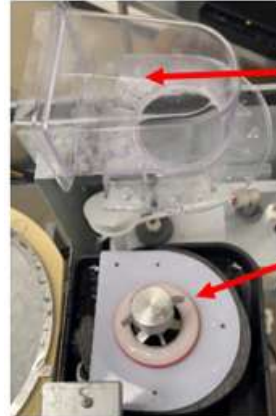
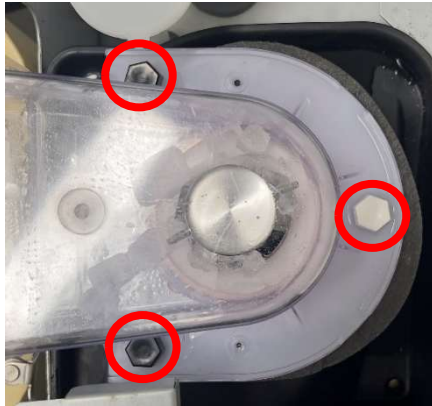
- Facing the unit, remove the ice dispense auger components from the ice hopper and set them aside. There is the main auger, and a smaller piece that slides into a guide plate inside the hopper. Remove this smaller piece as well.



- Using the prepared solution in the spray bottle, pour 1.5 liters into the Sanitizing/Descal Funnel on the top of the reservoir and allow to sit for 10 min. The bottle will have to be refilled, as it holds approx. 1 liter. Using a larger mouth funnel (pictured) in the smaller Sanitizing/Descal Funnel will make it easier to fill the reservoir.



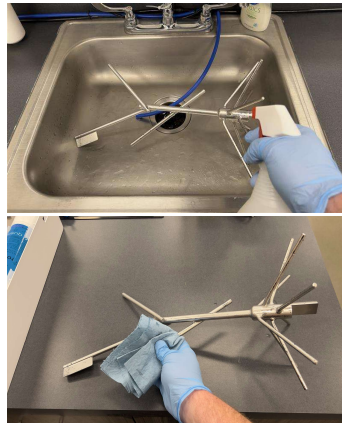
- Remove the three thumb screws (circled in RED) that hold the Auger Housing in place and remove the housing. Spray the auger housing with the sanitizing solution and wipe it dry. Spray the top portion of the auger and wipe it dry with a clean paper towel or clean microfiber towel, then reinstall auger cover.



Spray w/ sanitizer & wipe clean

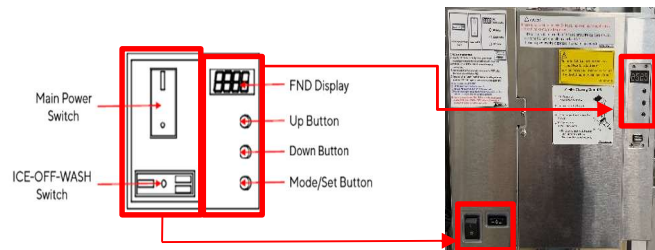
Spray w/ sanitizer & wipe clean

- Spray the inside of the hopper and auger components with sanitizing solution and let sit for 5 minutes then wipe dry. Reinstall the auger components into the hopper. NOTE: The auger can only be installed one way, by sliding into the half-moon slot at the bottom of the hopper. Reinstall the hopper cover.



- 10min after adding the sanitizer to the Sanitizing/Descal Funnel, turn the IOW switch to "Wash".

- The auger will rotate for 5 minutes churning the solution inside the auger housing, then the water reservoir and auger will drain for one minute.



- Next, the unit will perform 3 rinse cycles. The reservoir will fill with water, and then the auger will churn for 1 min then drain for 30 seconds, and this will repeat 2 more times. After the rinse cycle, set the IOW switch to "OFF".

12. Turn off the water supply and add a 3' piece of tubing the "OUT" port of the filter. This tubing can be used to gently rinse the sanitizing solution from the ice hopper.
13. Perform a "Forced Drain Function" to drain the reservoir of any remaining water.  
To perform the **Forced Drain Function**: With the Main Power Switch set to "ON," press the "DOWN" + "MODE/SET" buttons simultaneously for 3 seconds on the FND (Flexible Numeric Display) panel. Water will purge from the water reservoir and auger housing for 90 seconds.
14. Reinstall the Hopper Cover and reinstall the Top Cover.
15. Turn the water supply on and set the IOW switch to "Ice".
16. The unit will fill with water and begin making ice, and the Sanitizing Procedure is complete.

Assuming the filter has been flushed and installed, the drain kit and condensate pump or drain connection have been set up and/or installed, and the unit has been set into place, the **Wellsys i30 Ice and Water Dispenser** is now ready for use.